

Pit Conveyor



GRAIN MASTER

Features and Options



- *Designed for Durability and Performance*
- *Capacity up to 10,000 Bushels per Hour*
- *Rubber Crescent Top Belt*
- *Folding Rubber Hopper 10' Long Doors*
- *Spring Loaded Tightener on Conveyor Belt*
- *Other Sizes Available, Call for Information*

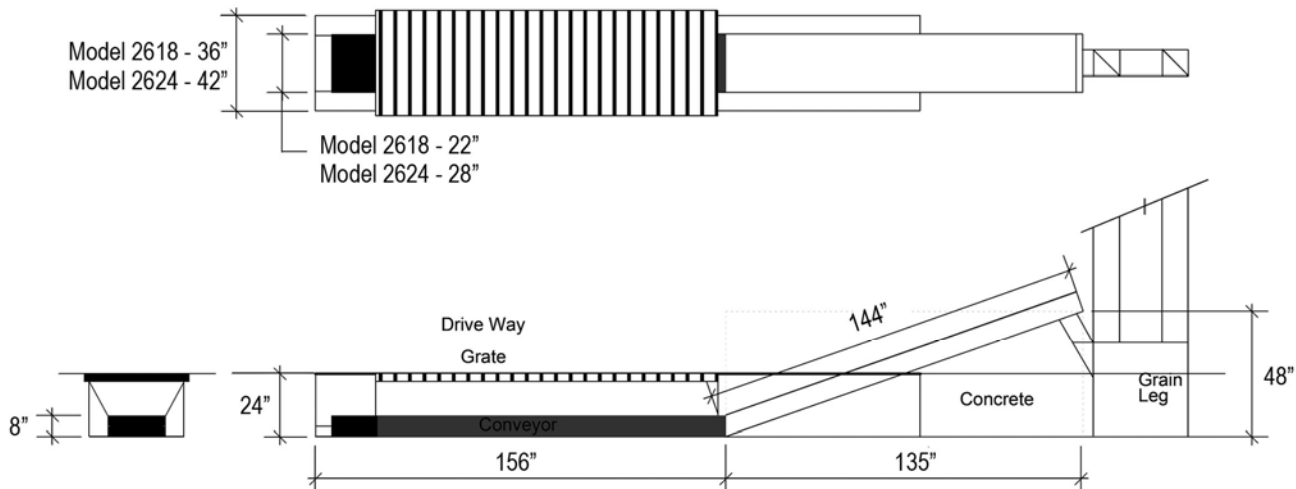
*Optional... Electrical, Hydraulic or Gas Drive
Hot Dipped Galvanized*

www.tmwattachments.com



Pit Conveyor Specifications

Model	2618PC	2624PC
Overall Length	26'	26'
Conveyor Width	22"	28"
Length of Horizontal	156"	156"
Length of Incline	144"	144"
Height Under Spout	48"	48"
Trench Width Needed	36"	42"
Trench Depth Minimum	24"	24"
Belt Widths	18"	24"
Drive (Electric/Hydraulic/Gas)	Yes	Yes
Bushels per Hour	8000 BPH	10,000 BPH
Optional Drive Over Grate (Wheel Tracks Covered with Plate)	36" x 120"	42" x 120"



Your TMW Dealer



522 Meeker Avenue • East Eden Valley, MN 55329
www.tmwattachments.com



© 2013 TMW